

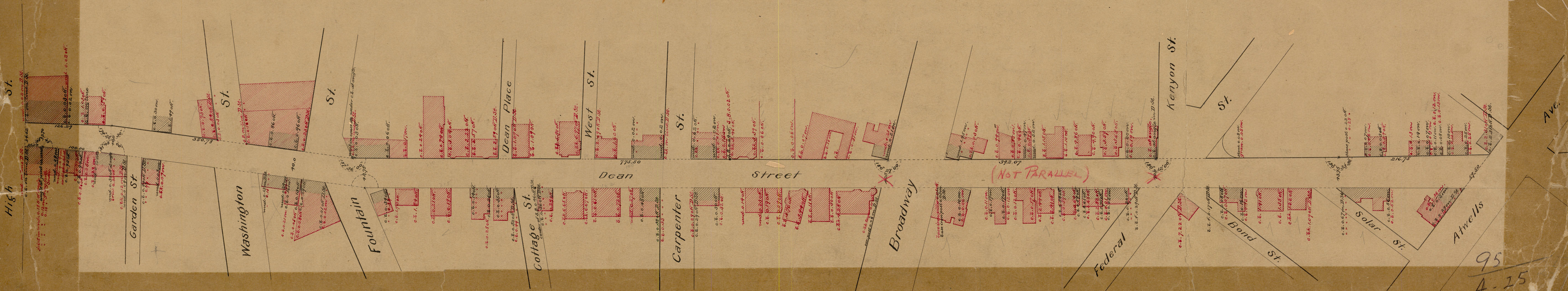
Map of  
DEAN STREET

From High St. to Atwells Ave.

Scale 60 feet per inch.

STREET LANE DEPT.  
Feb. 13, 1901  
029862

Notes in black from survey made in 1877,  
based on plat of layout made Dec. 1848.  
Notes in red from survey made Dec. 1897.



72  
73

95  
A-25

95  
A-25

87  
15